



DIOCESAN FUTURES TASK FORCE

REPORT TO DIOCESAN CONVENTION

OCTOBER 2, 2010

BACKGROUND

HOW WE ARRIVED HERE

TODAY...

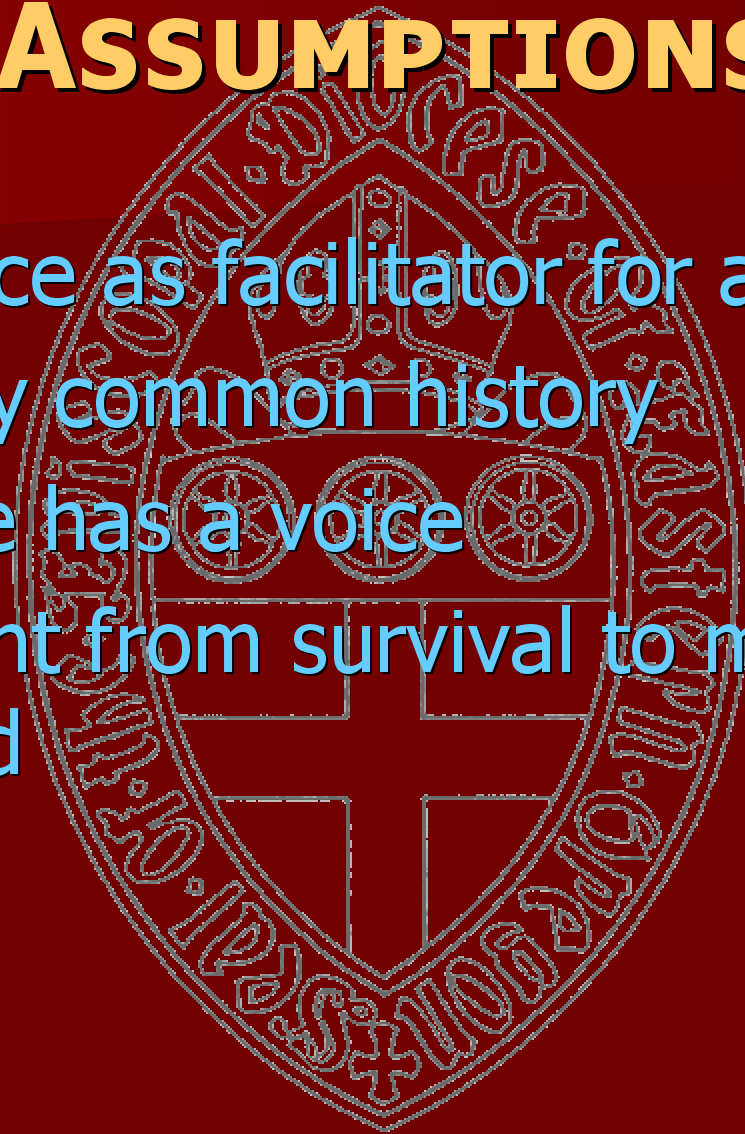
- ⌘ 1907 until 1970, the Episcopal Diocese of Eastern Oregon was a missionary diocese
- ⌘ We became a diocese at Convention November 19, 1971
- ⌘ Coalition 14 came into being in 1971
 - ⌘ 25% assessment
- ⌘ Domestic Missionary Partnership, 1998
- ⌘ Funding has shifted within DMP and EDEO is no longer receiving general budgetary support

ASSUMPTIONS

- ⊗ We cannot keep the status quo
- ⊗ We will need to make sacrifices from all quarters
- ⊗ EDEO is and will continue to be a 'mission' diocese
- ⊗ Culture change is what we're about
- ⊗ We are Episcopal

ASSUMPTIONS

- Task Force as facilitator for action
- United by common history
- Everyone has a voice
- Movement from survival to mission in the world



THE FUNCTIONS OF *OUR* DIOCESE

⊗ Relationships.

- ⊕ Serve as a facilitator for inter-congregational relationships (resource networking).
- ⊕ Serve as a facilitator for relationships within the Episcopal Church and the Anglican Communion.
- ⊕ Develop and establish and ecumenical relationships for congregations and for the diocese.

⊗ Accountability.

- ⊕ Oversight of diocesan-owned properties.
- ⊕ Assist in the development and implementation of local mission.
- ⊕ "Branding" that we have consistency as Episcopalians.
- ⊕ Training for church leaders

FUNCTIONS...

• **Communication.**

- ✦ Providing information not otherwise available.
- ✦ Communications link between congregations.
- ✦ Ministry/formation/education through combined resources.

• **Identity through common mission.**

- ✦ Role of Bishop as shepherd, pastor for clergy and pastor for small congregations without clergy.
- ✦ Articulate Anglican theology, etc., so that we have consistency as Episcopalians.
- ✦ Mission development/implementation through combined resources.
- ✦ Stewardship.

• **Administration.**

- ✦ Management of commonly held resources so that all functions may happen.

TASK FORCE STEPS

- Research
- Data Collation
- Test alternatives and Formulate Recommendations
- Present Recommendations



CALENDAR

- Council Retreat, November, 2010
- Initial Recommendations to Council early in 2011
- Special Convention later in 2011



QUESTIONS THAT REMAIN

- ✦ To/with whom do we belong? With whom are we connected?
- ✦ What's an appropriate "cost" of being a part of the Episcopal Church for a congregation? Whose money is it?
- ✦ Is there will within the diocese to embrace significant change? Where is the "fire in the belly" passion for our way of living Christ in the world?
- ✦ What is the dream for the Episcopal Church in Eastern Oregon? What will it take to make the dream come true?
- ✦ How do/can we honor the abundance of God's gifts with limited resources? If we are to be an oasis in the high desert, what does the oasis look like?
- ✦ How do/can we go about supporting one another in our common mission?



CHRIST'S HANDS IN THE WORLD...

